



BLA ANNUAL MEETING

MAY 28, 2017

WHAT WE'RE DOING TODAY

- 1) Frequently asked questions from lake residents
- 2) Milfoil update - going into our 4th year
- 3) How residents can help
- 4) Clean, Drain & Dry (this year's "theme")

FAQS

RESIDENTS' FREQUENTLY ASKED QUESTIONS



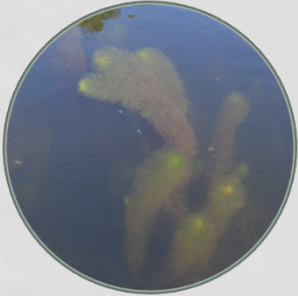
- 1) Did the sea plane bring milfoil to Four Seasons?
- 2) Are we doing everything we can to fight milfoil?
- 3) Should we be using chemicals?
- 4) Who can join the effort?

DID THE SEA PLANE BRING MILFOIL
TO FOUR SEASONS?

NO!



ARE DOING EVERYTHING WE CAN TO FIGHT MILFOIL? YES!



Educating



Locating & Reporting



Removing

EDUCATING

- Educational flyers distributed door to door
- Lake Host Program grant for Amherst Town Beach
- Weed Watcher Brunch - open to everyone - 5/21
- BLA Annual Meeting Presentations
- Boat Inspection & Invasive Species Day at Four Seasons 6/11
- BLA Annual Picnic on 8/19

LOCATING AND REPORTING

- Weed Watching at least monthly
- Kayak the Cove on 7/29 & 8/26
- Diving/scouting
- Of course, resident sightings!!!

REMOVING

- Once a plant is reported, a diver will remove it usually within 48 hours depending on cyanobacteria presence
- DES could take several weeks to reach a lake since they have 2 divers working as a team one day/week
- Baboosic harvesting begins when first plant is reported. This May we've already had 2 harvests

SHOULD WE BE USING CHEMICALS?



Nashua River in December

SHOULD WE BE USING CHEMICALS?

- **NO!** DES would **NOT** approve use of chemicals
- Chemicals are expensive and only a band aid
- Hand pulling removes the entire plant **AND** roots
It's permanent
- Hand pulling is safer for wildlife and residents
- Our volunteers work for **FREE!**

WHO CAN JOIN THE EFFORT?

**Any Baboosic Lake resident of any age
can be on the look out and report milfoil
or become a Weed Watcher**

(hint: it's a great resume builder for kids)

REPORTING FROM YOUNG RESIDENTS AND EXPERIENCED WEED WATCHERS

- 2 twelve year old boys found and reported a 5' tall plant while fishing in Washer Cove last June
- Weed Warrior/Board Member Mitchell & hub Marc, found 12 plants in Four Seasons last May and several more this May in Washer Cove & Lenny's *OLD* cove
- Ellen Fallon found our "big one" and many others in the deepest part of Washer Cove on Kayak the Cove Day in June

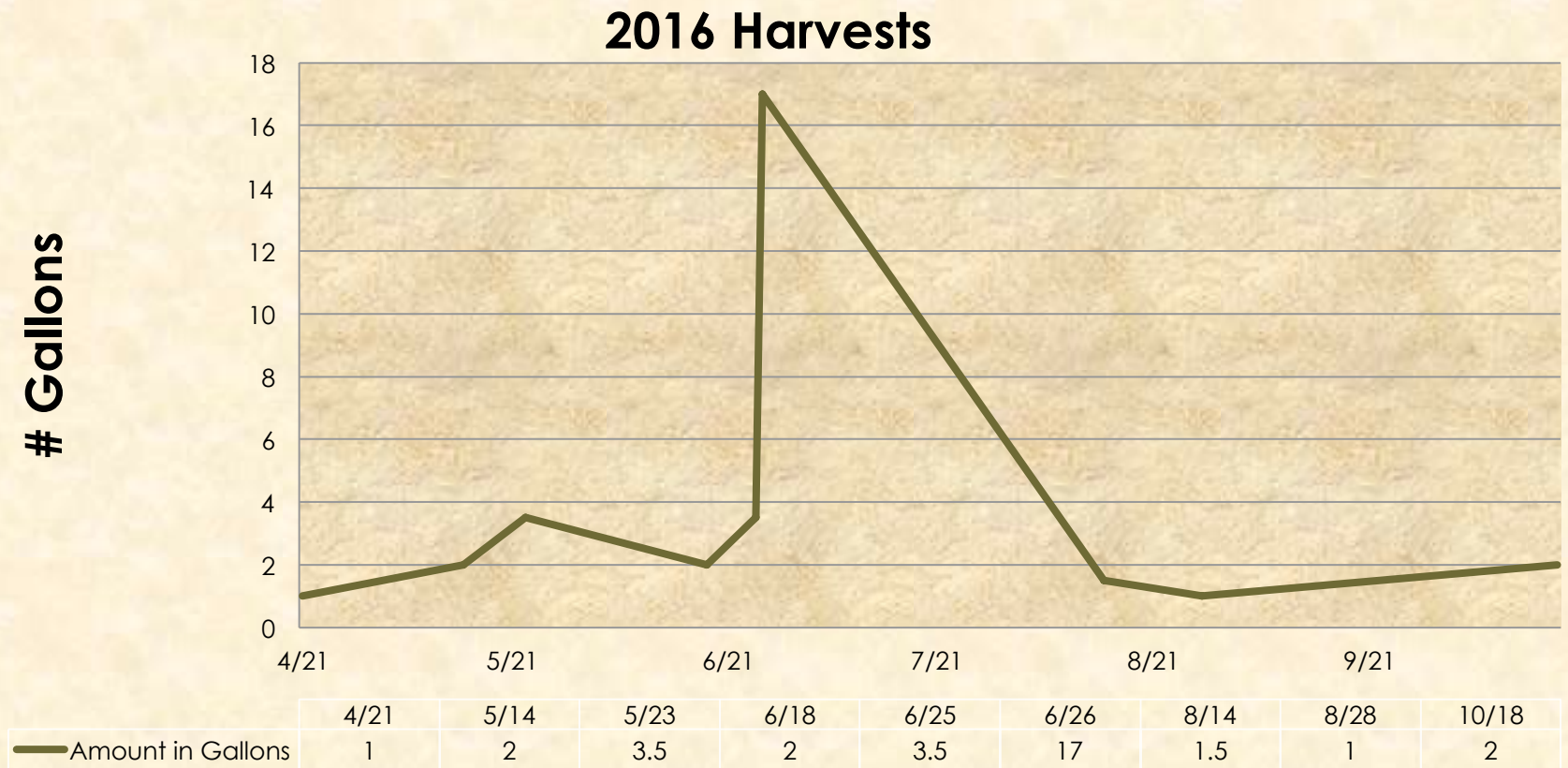
MILFOIL UPDATE

HARVEST AMOUNTS AND PARTICIPATION

MILFOIL BY THE NUMBERS

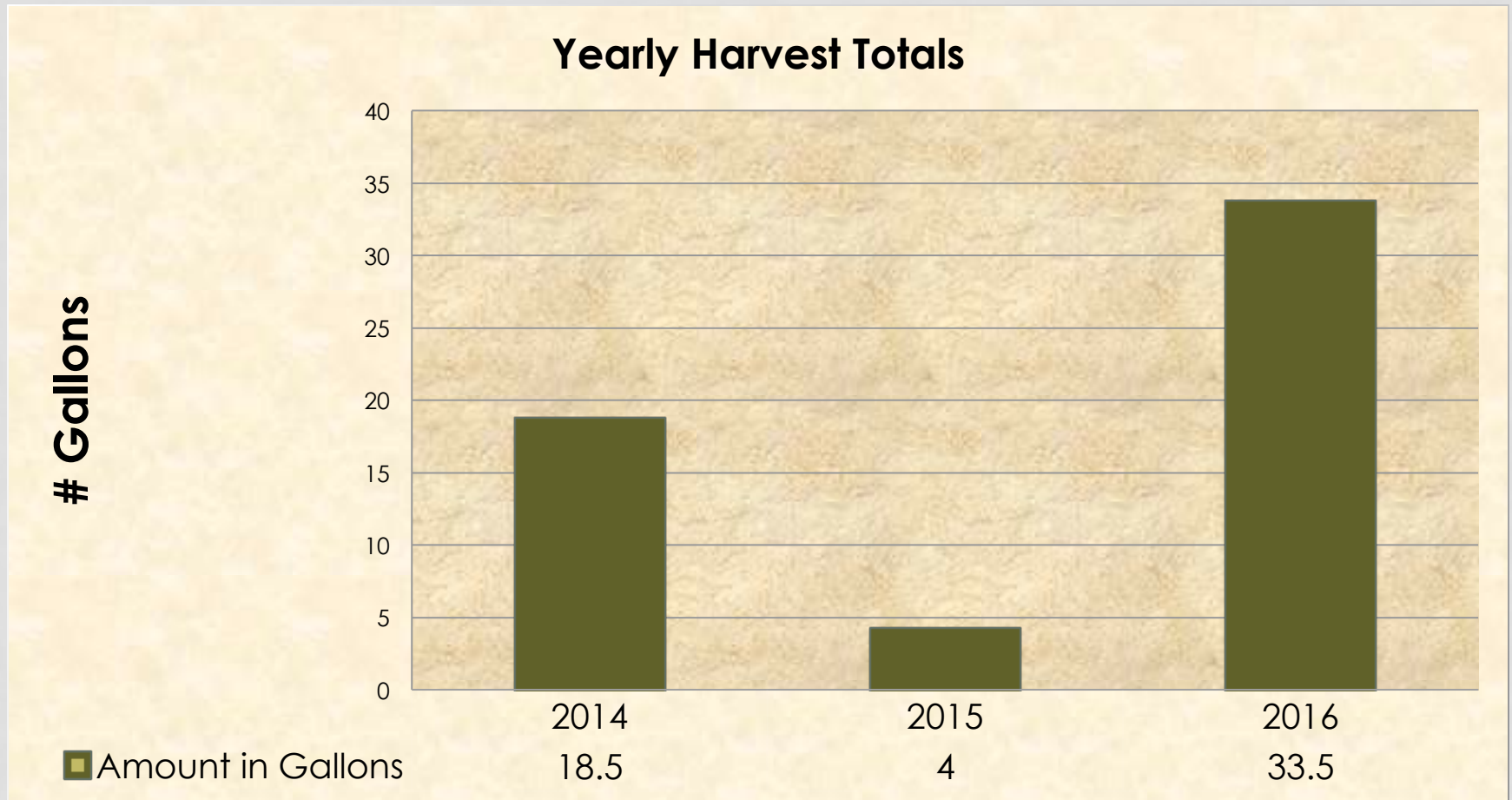
- Number of gallons harvested in 2016
- Number of gallons harvested in previous years
- Why so much milfoil last year?
- Number of volunteer divers & Weed Watchers
- Number of hours and money contributed by volunteers

NUMBER OF GALLONS HARVESTED IN 2016



33.5 Gallons

NUMBER OF GALLONS HARVESTED 2014 - 2016



WHY SO MUCH MILFOIL LAST YEAR?

- Several large plants in the middle of Washer Cove were located and removed. That one harvest was over $\frac{1}{2}$ the year's total
- This large stand of milfoil was fragmenting the year before and small plants were popping up all over the cove

NUMBER OF VOLUNTEER DIVERS & WEED WATCHERS?

- 25 active Weed Watchers
- 5 certified weed control divers & a new dive “scout”
- 15 - 20 participants in every Kayak the Cove event

TIME & MONEY CONTRIBUTED BY VOLUNTEERS IN 2016

- ~300 hours includes weed watching, outreach, making supplies, training, etc.
- ~ \$14,000.00 in hours and personal funds

HOW RESIDENTS CAN HELP

WITHOUT A MAJOR COMMITMENT!

AVOID ALL BUOYS & OBEY ALL SIGNS



JOIN US FOR KAYAK THE COVE



Anyone can join us for these events & we need you!

BECOME FAMILIAR WITH YOUR WATERFRONT PLANTS



NEVER DRIVE THROUGH DENSE
VEGETATION!



LEARN HOW TO IDENTIFY MILFOIL IT'S EASIER THAN YOU THINK!



A QUICK LESSON ON MILFOIL ID

DON'T WORRY PHOTOS WILL FOLLOW!

- Has a bright green tip (usually)
- Snakes along surface when it runs out of room
- Looks like a fluffy squirrel tail
- Can have a green or red stem
- Roots are often seen growing from the stem of the plant (that's how they spread)
- Fragments are often seen floating in areas of high traffic where milfoil is growing

BRIGHT GREEN TIP - MOST OF THE TIME



SNAKES ALONG SURFACE (THIS IS BABOOSIC IN 2014)



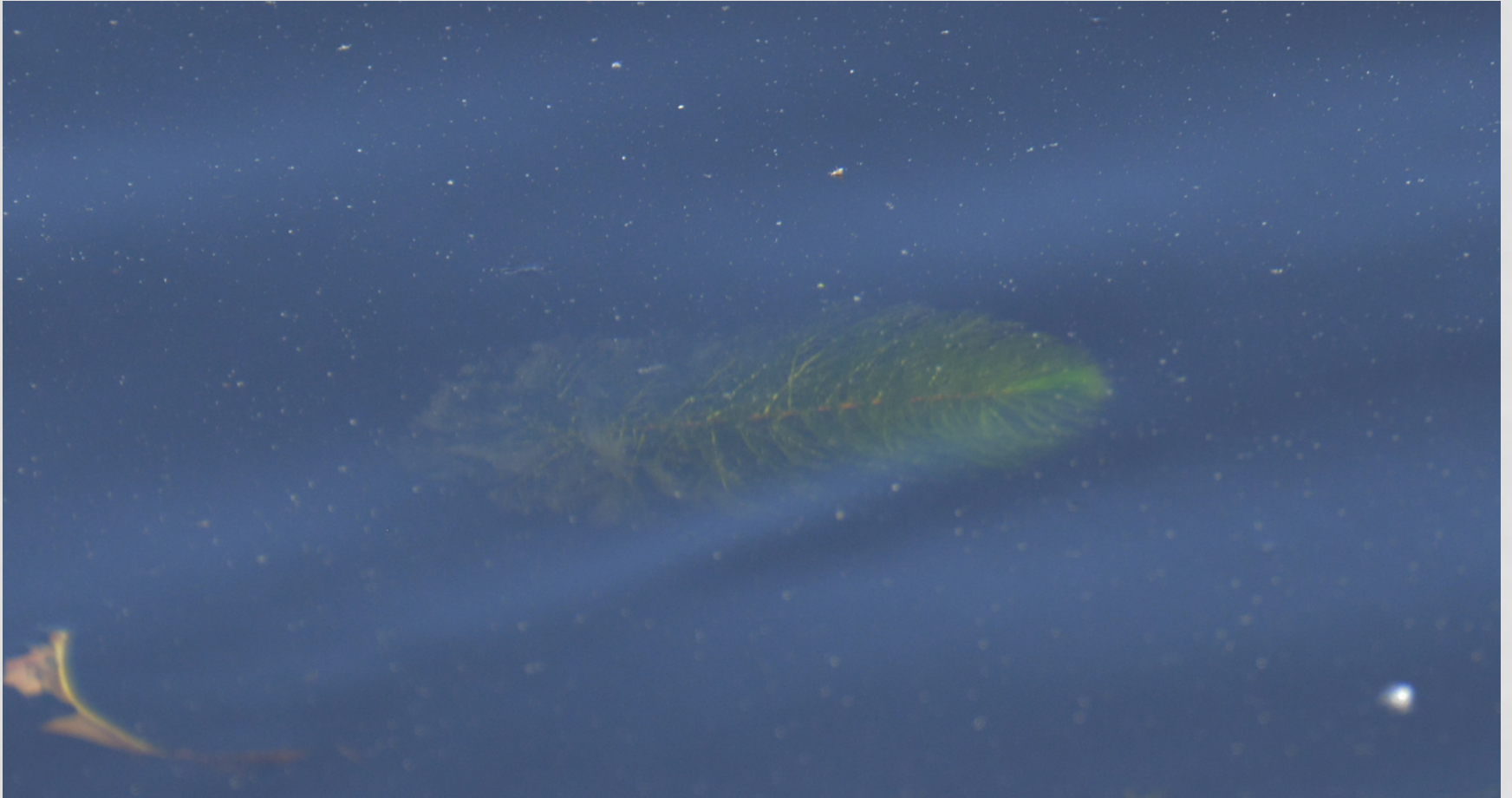
FLUFFY LIKE A “SQUIRREL TAIL”



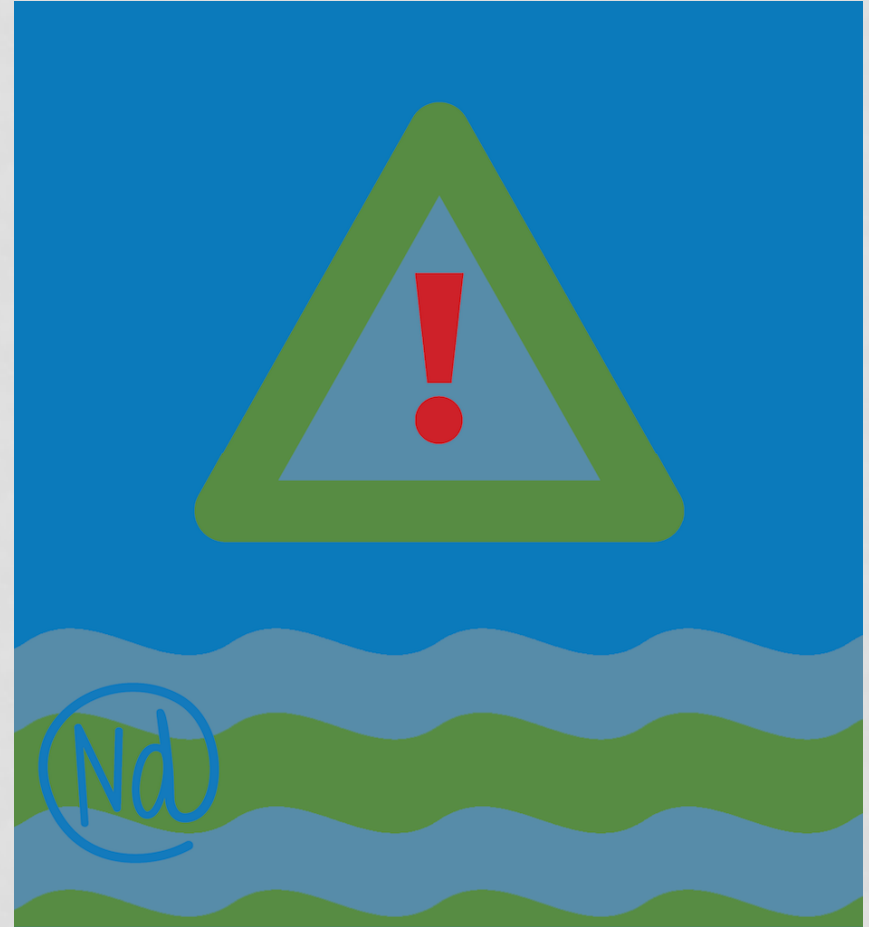
RED STEM AND ROOTING



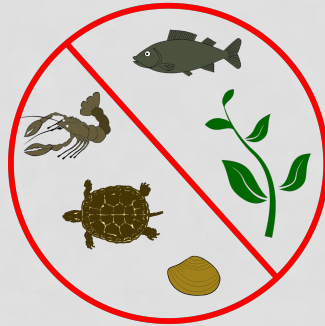
FRAGMENT FLOATING ON SURFACE (ALSO WASH UP ON SHORE)



YOU CAN REPORT SUSPICIOUS PLANTS (IMMEDIATELY)



LEARN HOW TO REPORT SIGHTINGS USING LAKES SOS (FLYER ON TABLE)



1. Download from the App Store
2. Open the Lakes SOS and go to Organizations
3. Touch the Baboosic Lake button
4. Go to the New Report tab at the top
5. Choose Invasive Species
6. When you're finished filling out the form, touch the send icon and your report will be emailed directly to me

TEXT OR EMAIL SIGHTINGS

Email: tara@naturedigger.com

Call or text: 603-566-5752

Please don't be embarrassed
or scared to contact me
about suspicious plants!

VISIT THE FOUR SEASONS WEBSITE TO
EDUCATE YOURSELF FURTHER

www.4seasonsnh.com/invasive-species

You will find more images and
reporting info here...

(no login necessary for this page)

AS A REMINDER: WHY DO WE CARE IF WE HAVE MILFOIL?

- **Lowers property values**
- Degrades water quality
- Hampers recreation
- Becomes a swimming & health hazard
- Chokes native plants & diminishes wildlife diversity
- Hurts overall size and populations of native fish

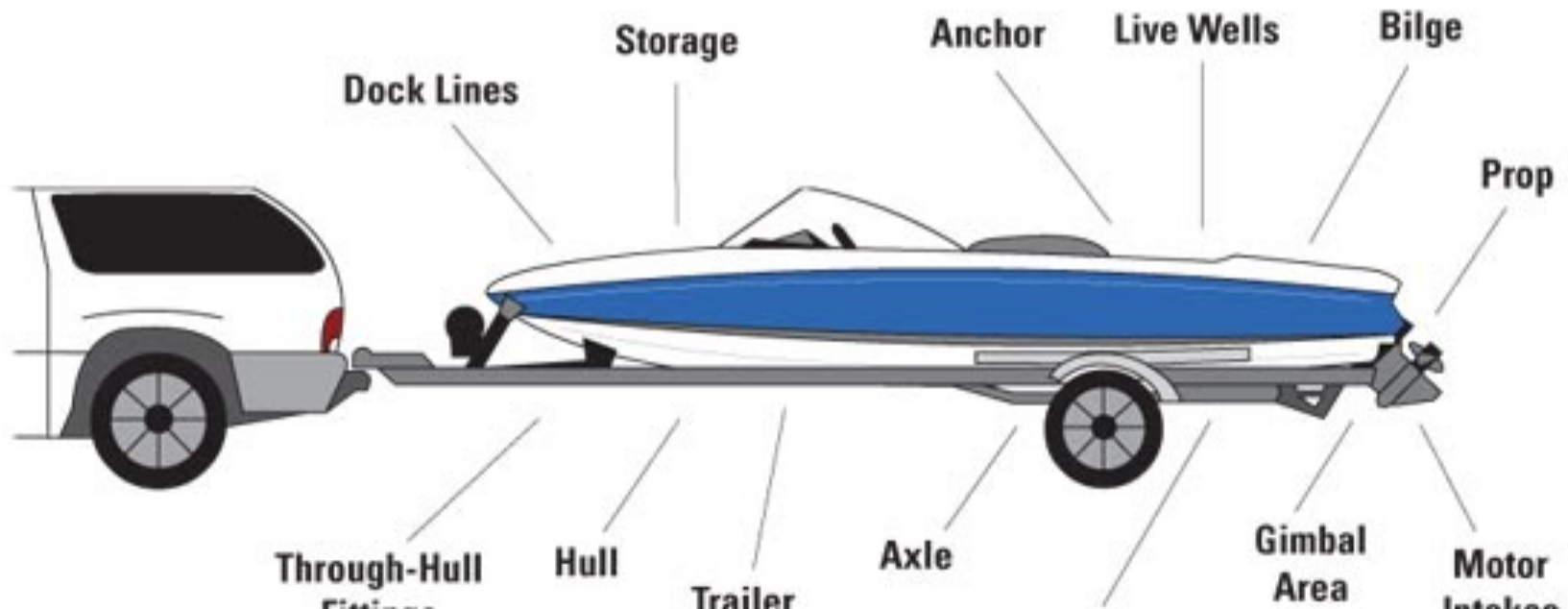
CLEAN, DRAIN & DRY

EVERY TIME YOU LEAVE A WATERBODY

CLEAN, DRAIN & DRY

KATHY BOYD

Inspect everything!



CLEAN (BOATS)

- **Remove** all aquatic plants (including roots, stems, leaves, seeds and fragments)
- **Remove** all bottom sediment (muck)
- **Clean** the prop, anchor hull, dock lines, paddles...
- **Scrub** all surfaces that are rough to the touch
- **Wash** your vessel thoroughly with a pressure washer, if possible use hot water (140 degrees is recommended)

CLEAN (TRAILERS)

- **Check** every part of the trailer, including the rollers, bunks and axles and remove all plant fragments, seeds, animals and even the tiniest foreign objects
- **Wash** your trailer with a pressure washer, if possible use hot water (140 degrees is recommended). Do not use bleach.
- **Remember** that many invasive species get their start at boat launches when they drop from boats and trailers while loading, unloading and launching!

CLEAN (FISHING & DIVE GEAR)

Fishing Gear:

- **Clean** all equipment making sure nothing rough has attached to lines
- **Clean** waders paying special attention to felt bottom boots
- **Discard** everything in the trash
- **Soak** all fishing gear and equipment in hot water (140 degrees if possible) for at least two minutes

Dive Gear:

- **Remove** all vegetation from masks, tanks, BCs, regulators, and fins
- **Rinse** all equipment, including wet suits - inside and out

**FISHERMEN: NEVER THROW LIVE BAIT
OR WATER IN ANY WATERBODY!**



**NEVER DUMP AQUARIUM PLANTS,
ANIMALS INTO A WATERBODY!**



A NEW LAW IN NEW HAMPSHIRE!

As of January, 1, 2017
it became **illegal** to
transport ANY vegetation,
native or invasive
from waterbody to
waterbody!

**REMOVE EVERY PIECE OF VEGETATION
OFF THE BOAT & TRAILER**



CHECK PROPS THOROUGHLY



CHECK TRAILER HITCHES



DRAIN

- Drain bilges, live wells and every compartment/container that holds water FAR from a waterbody
- Leave drain plugs out while in transit, but remember to put them back in once you arrive at a waterbody!
- Discard unused bait in the garbage, **NEVER** throw into a river or lake unless it was caught in that waterbody

DRY

- Dry **EVERYTHING** (engine compartments, floor, seats, tubes, all of it!) with an absorbent cloth (cotton or microfiber)
- Dry in the sun for at least 5 days

Have boats professionally cleaned if they have been in a waterbody with Asian clams, zebra mussels, quagga mussels or spiny/fishhook waterfleas!

PLEASE LET KATHY OR TARA KNOW IF
YOU SEE...



PLEASE LET KATHY OR TARA KNOW IF
YOU SEE:

- ✓ Marine Patrol
- ✓ NH Fish and Game
- ✓ DES
- ✓ Or any other state/federal vessel

Launching anywhere in Baboosic!

Residents **can and should** ask if vessels have been inspected!

2 QUESTIONS TO KEEP BABOOSIC SAFE FROM INVASIVE SPECIES

1. What body of water has the boat been on?
2. When was the boat last cleaned, drained and dried?

CONTACT INFORMATION

Email: kathy@severancetrucking.com

Cell: 978-432-0858

Home: 603-424-2469

Please visit the Four Seasons website for complete Clean, Drain & Dry info:

4seasonsnh.com (Invasive Species tab)

THANK YOU &
HAVE A GREAT SUMMER!

QUESTIONS?